

RVLT



PRESIDENT'S REPORT 2010

Sometimes life throws you a curve ball that can at first, be devastating.

That is how I felt initially when I got my diagnosis of cancer. a year later, I appreciate acutely the physical pleasure of simply being I said to a friend, it feels like being a newly hatched butterfly out of her and drying her wings in the sun.

I remain fascinated and passionate about the natural world which surrounds me.

Enchantment reigns!





PRESIDENT'S REPORT 2010

INFORMATION DESCRIBING CHARITY'S ACTIVITIES - 2008

THE OBJECTS OF THE RUITER VALLEY LAND TRUST, AS STATED IN THE CHARTER, ARE:

- To maintain tracts of land in perpetuity in the Eastern Townships of Quebec and elsewhere, as forest and open country for a view to the preservation of the wilderness, and to its enjoyment by members of the local community and the general public.
- To conduct such other activities as may help preserve the rural nature of the area, for example, the acquisition of land, the acquisition of development rights (easements and servitudes), the maintenance of productive farm and forest land, and the establishment of wildlife sanctuaries.
- To promote education and research into the conservation and proper use of our natural resources, human, physical and environmental, and to act as an information centre for other conservation groups and the general public. Results of any and all research will be published and made available to the public.
- To promote the concepts of preservation of the wilderness in schools and other institutions, through lectures, films, seminars and field trips.

PRESIDENT'S REPORT 2010



SUPPORT ACTIVITIES FUNDRAISING

Grants

Successful applications were made by Guy Langevin to CRÉE, Deputy, Pierre Paradis, the Memphramagog MRC Pacte Rural, Mountain Equipment Coop, Potton Municipality, the Potton Optimist Club and Townshippers.

Membership/Donors

The majority of memberships were renewed along with a few new additions. The Trust is very appreciative of the long-term support and generosity of its donors.

ADMINISTRATION

Office and Staff

- General administrative overhead was again held to a minimum, as members, volunteers and directors all donated their time freely: Office space in the homes of board members and staff was provided as required.
- Isabelle Gregoire is our educator for the schoolchildren programs in Potton Lac Brome and Eastman.
- Meetings of the Board of Directors were held on May. 23rd, and December 27th in addition to several other working committee meetings held throughout the year; with Éric Deschênes; Isabelle Grégoire and ACA.

We held our Annual General Meeting on December 27th, 2010. Members of the Board were elected as follows: France Lapointe, Guy Langevin, Marie-Claire Planet, Stansje Plantenga, Daniel Sultan and Bobbie Summers.

In our Board meeting following the AGM, the Executive Council was voted in as follows: Stansje Plantenga President, Marie-Claire Planet Vice-President-Secretary, Guy Langevin Treasurer





PRESIDENT'S REPORT 2010

CHARITABLE ACTIVITIES Recreation and Networking

With the community:

All RVLT trails are open to the public year-round. *Éric Deschênes* can be contacted on our website during the x-country ski season for an update on weather conditions.

- Board members are available to the community to answer any queries on Trust projects and activities.
- We can also be reached for updates on our programs at www.valleeruitter.org or by email at info@ruitervalley.org.

With the municipality:

- The President joined the Municipal Environmental Consultation Committee, the focus for 2010 was composting at the municipal level.

Within the region:

- The President attended the annual meeting of the Comité de gestion provisoire de la réserve des Montagnes vertes.
- The president attended the second session of regional environmental planning as part of the MRC sustainable development initiative.
- The Treasurer attended the annual ACA meeting.
- The Treasurer worked with the Katimavik volunteers and Frank Ruiz to find a solution to joint ski and snowshoe access on our trails

On a provincial level

- The treasurer participated in the training program on Eco-Gifts provided by the Canadian Wildlife Service

On a national level

- *The President was invited to join the CLTA as a Board member*

RVLT as consultant to other Land Trusts

- The President continued in a consultant role to local conservation groups looking at using the "Faune sans frontières" program as part of their conservation strategy

With NGOs:

Memberships

- Union Québécoise pour la conservation de la nature (UQCN)
- Missisquoi River Basin Association (MRBA of Vermont)
- Missisquoi River Basin Assoc. of Quebec
- Regroupement des milieux naturels (RMN)

Financial Partnership &/or working relationship

- Nature Conservancy Quebec
- Appalachian Corridor (ACA)
- Canadian Land Trust Alliance
- Trees in Trust



PRESIDENT'S REPORT 2010

Our school education program now in Mansonville, Eastman and Knowlton continues.



Since 2002, over 400 students from 6 primary schools in the region have been initiated to learning about the conservation of natural areas. That's in addition to the many teachers and parents who have accompanied the children on their field trips and members of the community who have visited the environmental expos organized annually by the students.





PRESIDENT'S REPORT 2010

LINKING CULTURE WILDLIFE AND ART

During the school year we at the Land Trust focus on teaching the biological reality of local animals and their habitat.

For this special project we used the medicine wheel from the Amerindian culture as a tool to release the imagination of the children enabling them to create costumes and masks of several animals which they represented on their float in the annual Multicultural Festival parade.

Isabelle Grégoire gave the course during the Potton summer Day Camp.





PRESIDENT'S REPORT 2010

SPECIAL EVENTS

- Annual trackers Conference Saturday, November 27th
-Participation restricted to trackers of the Keeping Track Program.

Projet de suivi faunique de Corridor appalachien

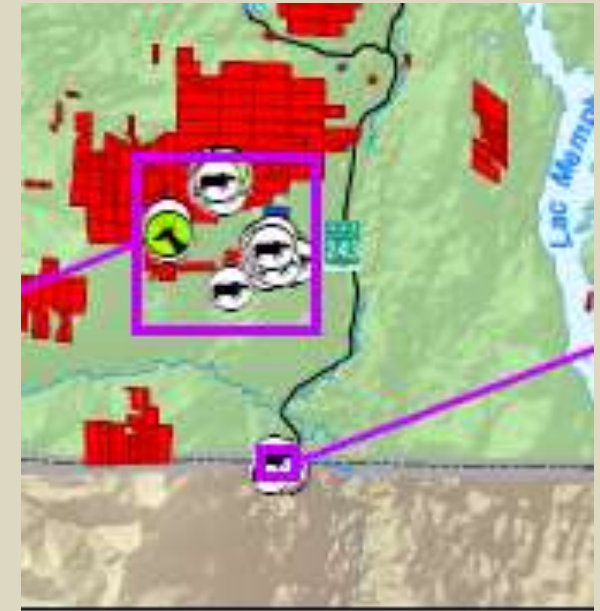
- Caroline Daguét from ACA speak about the ACA Greenway Project in Monteregie

Species map

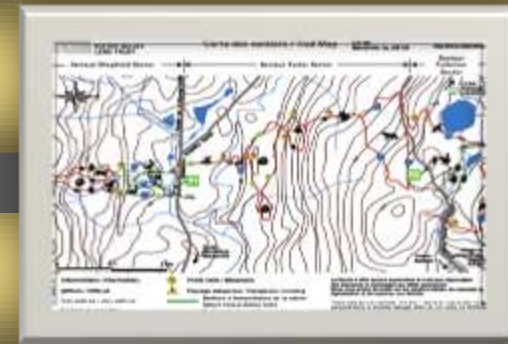
- Presented by Stansje Plantenga (RVLТ) et Louise Gratton (Nature Conservancy) presented the first species maps for the regions the teams are working in, featuring data collected on Moose and Black Bear.

Tracking in the Bolton-east sector

- The Vallons de la serpentine team presented a power point on their findings over the last year



PRESIDENT'S REPORT 2010



PHYSICAL SITE

ON SITE COURSES

- "FLORA" course with Louise Gratton

TRAIL MAINTENANCE

- As usual, autumn clean up and trail grooming in the winter was done by Eric Deschênes of Cultiv'Art. Eric patrols the trails regularly in winter and files reports on usage along with your comments! Thank-you to the volunteers who participated in the October trail clean-up this year!
- Our welcome kiosk on Ruitter Brook Rd was redesigned and rebuilt.
- Over the years several changes have been made to the trail system. This year our trail signage was over hauled to reflect these changes under the direction of our Treasurer. New as well: 24 no vehicle signs, 20 signs requesting snowshoers to walk on the side of the trail and not in the ski track, and 11 signs closing the trail during the November Deer hunt.
- The two main bridges were pressure washed and sealed, and a smaller bridge on Red shoulder Hawk trail was repaired. Unfortunately another bridge in this area was lost due to vandalism by an all terrain vehicle. One new culvert was installed and two others were repaired.
- The decision was made to dismantle the observation platform on Beaver trail as it was no longer safe to use.
- A new access of 30 metres just before the descent to the bridge was created for Deer Trail.
- 8 no access barriers were installed at key entry points to prevent the entry of motorized vehicles.
- 3000 new trail maps were printed
- Posters were made in celebration of the "International Year of the Forest".



FLORA



Photos: Landscapes S.Plantenga Trout Lily and photo of Stansje & Guy M.C.Planet



PRESIDENT'S REPORT 2010

CONSERVATION

- SCIENTIFIC RESEARCH

The RVLТ data base on the presence of Black Bear, Bobcat, Moose, River Otter, Mink and Fisher in the region now has 9 years of information from some of the sites. We anticipate working with biologists in the near future to draw conclusions and perhaps new directions from our studies. This is a tremendous volunteer effort. A BIG THANK YOU to all our trackers!

- ACQUISITIONS

Working in collaboration with ACA the RVLТ is looking at acquiring several conservation servitudes in two key areas.

Marie-Claire Planet and Daniel Sultan will donate an acre to anchor these servitudes along the Ruitер Brook.

The other area is the North Missisquoi River. We will have more news next year!